

# 10.1" Industrial Tablet IP65 N4200

FT101N4200ITCAPOB

metr<sup>o</sup>click™

- Intel® Pentium® N4200 QuadCore CPU
- 6GB RAM memory, 128GB eMMC storage
- Pre-installed Win 10 OS (without license - purchase separately)
- Rechargeable lithium battery, 7.4V/7000mAh (8.6+ hours operation) (v2) (v3)
- Kastus® 24/7 anti-viral & anti-bacterial coating
- Anti-glare surface treatment (chemical etching)
- 1000 cd/m² brightness (suitable for outdoor use) (v2) (v3)
- 10-Finger-multi touch capacitive touch panel
- 1.8mm cover glass with 7H surface hardness (IK08) (v2) (v3)
- Optically bonded touch panel to LCD panel
- Complete IP65 water- and dust proof
- Integrated W-LAN & Bluetooth 5.2
- Built-in front & back camera and microphone
- Integrated barcode scanner & fingerprint scanner
- 2 year guarantee (24/7 usage)



Metroclicks industrial (ruggedized) tablet is the perfect touch solution to be used as a hand-held device (or mounted pc) while performing tasks on the industrial floor or in rough environments. It is completely IP65 water- and dust proof (with all covers closed), has a 10-finger capacitive multi touch panel and 24/7 anti-viral & anti-bacterial coating by Kastus®, with a kill rate of >99% against surface bacteria, traditional viruses, and human coronavirus (3-in-1 protection). The rechargeable lithium battery will easily get you through your workday when needed, especially in an indoor or semi-indoor environment such as a factory floor or office. The battery lifetime depends on the brightness and active usage (it can last up to 8.6 hours of operation, without any stand-by mode).

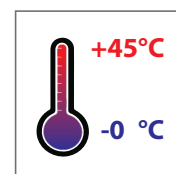
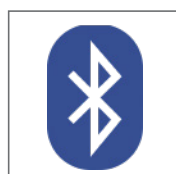
The tablet has an optically bonded touch panel, which will improve the stability, reduce the reflection, increase the viewing angle, and enhance the perceived brightness. It also provides resistance to dust particles and shows a better image in general.

The device is powered by Metroclick's industrial Apollo Lake mainboard. It is driven by the powerful Intel® Pentium® N4200 QuadCore processor with up to 2.50 GHz clock frequency. It is equipped with 6GB RAM and 128G eMMC storage.

Due to its robust design, the tablet is particularly suitable for use in harsh environments such as industrial, rough and outdoor areas. Besides the mobile solution, the device can also be used as a permanently installed control panel. Windows 10 is pre-installed on the device but no license is included, this can be purchased separately (available under accessories).



Legend / Notes	
Applicable to version 1	(v1)
Applicable to version 2	(v2)
Applicable to version 3	(v3)
Applicable to all Versions	None



<b>Product name</b>		<b>10.1" Industrial Tablet IP65 N4200</b>			
<b>Model number / EAN number</b>		<b>FT101N4200ITCAPOB / 6920734000388</b>			
Global Article Code	European Article Code	Release date (DDMMYY)	Version	Global Article Code	European Article Code
1010502264	0109202130305088	31	1010502433	0109202230305111	87
0109202230305111	87	4010077308	010720223030513606		

IP Rating	
IP65	

LCD Panel	
Screen diagonal (Inch/cm)	10.1/25.65
Display active screen size (cm)	21.70×13.60
Aspect ratio	16:10
Physical resolution	1920×1200
External Maximum showable resolution - Micro HDMI	1920×1200
Colours displayed	16.7M
Brightness (cd/m²) - after incl. touch panel & optical bonding	1000 (v2) (v3)
Contrast	800:1
Typical reaction time Tr / Tf (ms)	25 / 25
Visual Angle horizontal / vertical (°)	178 / 178
Backlight / Backlight Lifetime (hours)	LED / 50,000

Operation / Mechanical	
Operating Temperature (°C)	0 ~ +45
Humidity Range (RH)	10% - 90%
Net weight (kg)	1.20
Gross weight (kg)	1.70 (incl. cartontage)
Housing material	Plastic Case, Silicone Rubber Frame
Housing (mm) L × W × H	280.3 × 198.3 × 36.0 (v2) (v3)
Mounting	VESA 75 (v2) (v3) 4x M3.5 screw thread

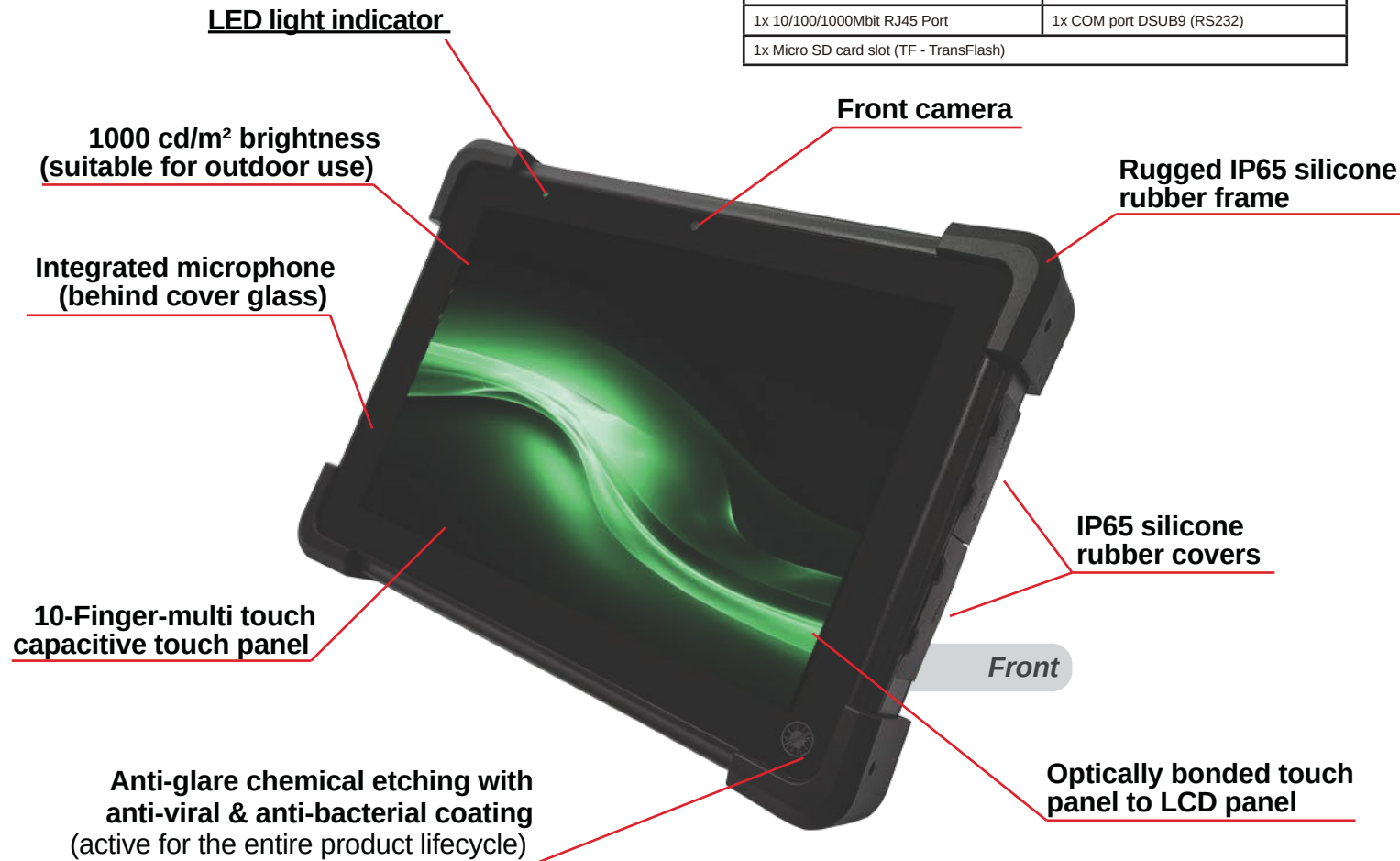
Included in the Delivery	
Power Supply (see Power section)	Short Installation Manual
Plastic Screen Protector	VESA 75 back plate (attached to tablet) (v2) (v3)
Battery (inside)	

PC System	
CPU	Intel® Pentium® QuadCore N4200
Graphic GPU	Intel® HD Graphics 505
Audio	Realtek ALC3236 Audio CODEC
Memory	6GB RAM
Storage	128GB eMMC
Network	1x Realtek PCIe GB LAN 8111G; Wi-Fi 802.11ax (see Wi-Fi specifications)
Bluetooth	Bluetooth 5.2 (high speed data transfer)
Microphone	Integrated (behind cover glass)
Preinstalled OS	Windows 10 IoT LTSC 2019 Entry (without license, purchase separately)


Touch Panel		
Touch Technology	Projected Capacitive 10-Point Multitouch	
Touch Connector	USB	
Touch Life (Contacts)	Unlimited	
Surface Hardness	7H	
Surface Treatment	Anti-glare (chemical etching)	
Glass Strengthening	Chemically Strengthened	
Additional Coating	Kastus® 24/7 Antimicrobial Coating (3-in-1)	
Touch Firmware	Included	Works with fingers, gloves & in rainy conditions
	Download from website	Works with capacitive touch stylus

Power		
Power Indicator	Green / Red LED	
Built-in Battery	Rechargeable Lithium Battery, 7.4V/7000mAh (v2) (v3)	
Power Supply	100-240V ACDC active switching; 12V DC-Out	
Working Power (V)	12	
Power Consumption / Active Working Time (w/o stand-by mode)	25% brightness, idle mode (indoor / semi-indoor)	6W / 8.6 hours minimum (v2) (v3)
	50% brightness, 50% full usage (semi-indoor)	10W / 5.2 hours minimum (v2) (v3)
	100% brightness, 100% full usage (outdoor)	15.5W / 3.3 hours minimum (v2) (v3)
Stand-By Consumption (W)	<1	

External Connectors	
1x 12V DC-In (to recharge)	1x Micro HDMI 1.4 (class type D)
1x USB 3.0	1x USB 2.0
1x Micro USB 2.0	1x Headphone port - Ear out only (3.5mm)
1x 10/100/1000Mbit RJ45 Port	1x COM port DSUB9 (RS232)
1x Micro SD card slot (TF - TransFlash)	





# Peripherals

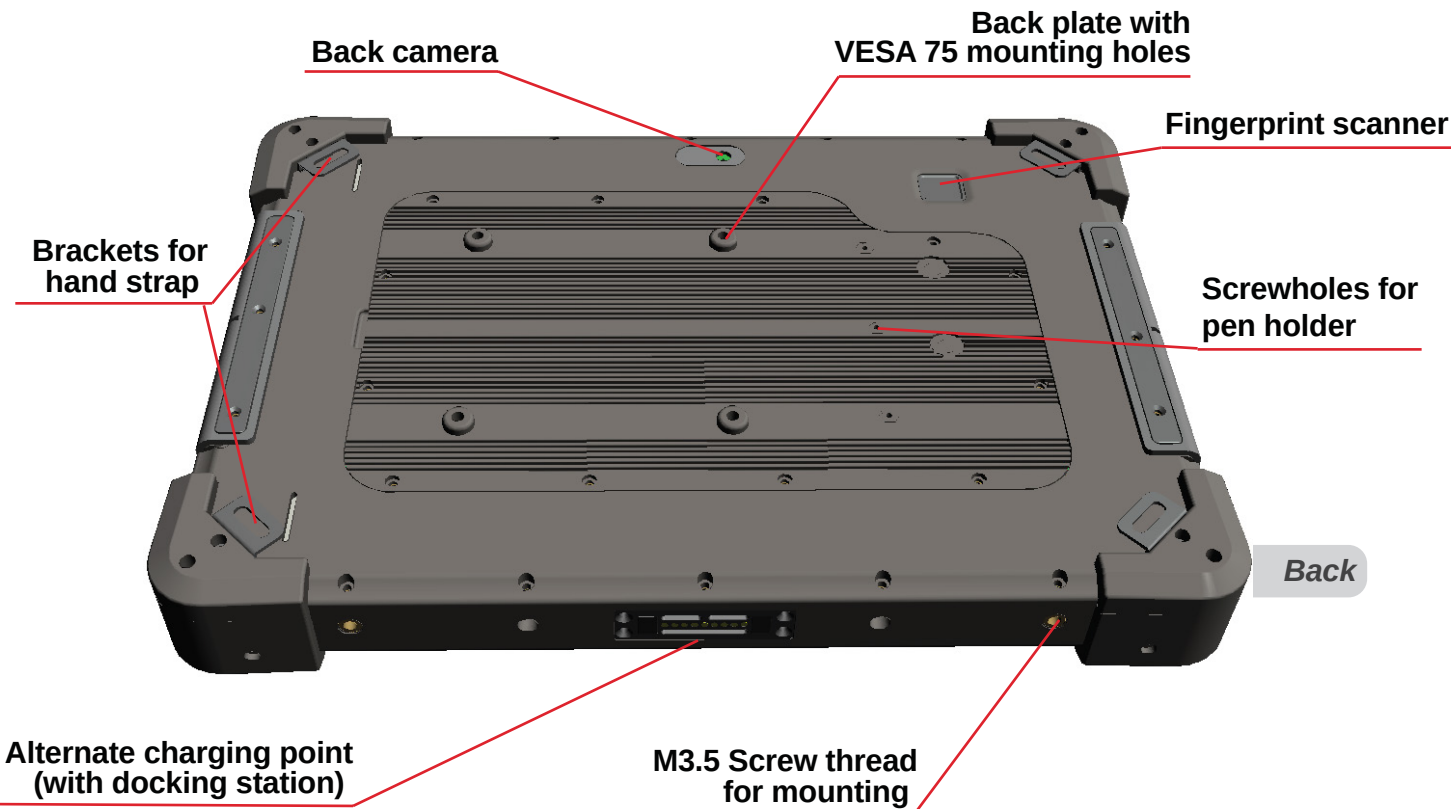
Wi-Fi & Bluetooth Specifications (AX200) 	
Product Name	Intel® Wi-Fi 6 AX200 Module
Wi-Fi	High-performance, low-power, dual-band Pre-Standard-802.11ax Dual Band 2x2
Band Channels	2.4GHz and 5GHz (2-160 MHz channels)
Wi-Fi Alliance certifications	802.11a/b/g/n/ac/ax(PreStandard), WPA/2 Personal and enterprise, WPS2, PMF, WMM, WMM-PS, WFD, Miracast, Passpoint R2, Voice Personal
Performance	TX Burst, TCP packet reordering, MSIx for reduced multi-core CPU load upto MCS11
Wi-Fi-Bluetooth Coex	MIMO TX/TX and Rx/Rx Concurrency
Bluetooth	Bluetooth 5.2

Fingerprint Scanner Specifications (MB-X4)	
Purpose	Register & unlock device (Windows 10)
Pixels / resolution	88×88px / 508 DPI
Storage capacity	100 unique prints (multiple fingers & accounts)
Unlocking time	<1s
FRR / FAR	<2% / <0.002%
Communication interface / UART	SPI / 57600
Additional features	build-in "Smart Learning" algorithm, allowing fingerprint matching to be faster over time
	Accepts 360° (degrees) fingerprint matching

OPTIONAL (not included in standard version)   GPS Specifications (UB-118)	
Product Name	UB-118
Chipset	High performance BD2/GPS chipset
Frequency	GPS L1 1575.42 MHz / BD B11561.098MHz
Power Consumption	100mW
TTFF (Time to first fix)	Hot start: 1s      Cold start: 32s
Accuracy (position)	Autonomous <2.5m RMS      DGNSS <1m RMS
Accuracy (velocity)	GPS(+BDS) 0.1m/s RMS      BDS 0.2m/s RMS
Accuracy (time)	100ns
Sensitivity (acquisition)	BDS -145dBm      GPS -147dBm
Sensitivity (tracking)	BDS -160dBm      GPS -162dBm
Protocol	NMEA 0183 (compatible with BDS)
Maximum altitude	< 50,000 meter
Maximum velocity	< 500 m/s
Maximum acceleration	< 4G

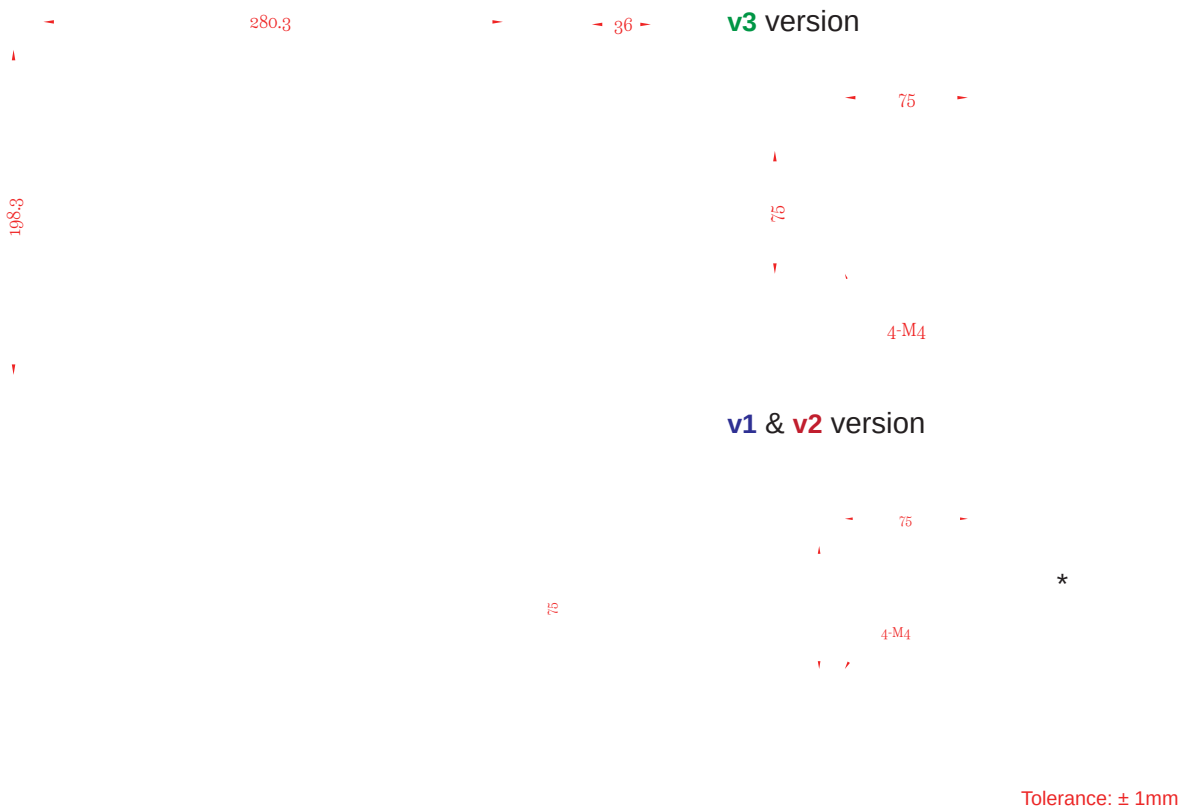
Barcode Scanner Specifications (N4680) 		
Product Name	Honeywell N4680 Decoded 2D Scan Engine	
Sensor	640×480 CMOS, 60 frames per second	
Illumination Wavelength	Warm white IED with CCT 3000K	
Aiming Wavelength	630nm Red LED	
Scan Angle	Roll: 360°, Pitch: ±50°, Skew: ±50°	
Field of View	Horizontal ±20°, Vertical ±15°	
Motion Tolerance	6 m/s	
Maximum image capture rate	120 frames per second	
Supported Symbolologies	1D, 2D barcodes, OCR, Poorly printed & on-screen bar codes	
Typical Depth of Field	C39	36mm - 747mm (5-10-20 mils)
	100% UPCA-A	46mm - 390mm (13 mils)
	C128	33mm - 598mm (5-10-20 mils)
	PDF417	42mm - 490mm (7-10-20 mils)
	QR-Code	40mm - 367mm (7-20 mils)
	Data Matrix	40mm - 182mm (10 mils)

Camera Specifications (front & back) 		
Camera	Front (screen side)	Back
Pixels	2MP (200W)	5MP (500W)
Pixel Size	1.75*1.75um	1.4*1.4um
Image Resolution	1600×1200	2592×1944
Image Transfer Rate	30 frames/sec	15 frames/sec
Lens Size	1/5 inch	1/4 inch
Optical Field of View	60°	73°
Glass finish (in front of lens)	Polished glass	
Output Formats	RAW RGB, RGB 565/555/444, CCIR656 YUV422/420, YCbCr422, and compression	





# Drawing



\* Capacitive Touch Stylus & Holder not included in standard version (for reference only)

## Revision History

### Update Notes:

<u>Version:</u>	<u>Changes:</u>
<b>v3</b>	- back-plate re-design for better <b>heat management</b>
<b>v2</b>	- Increased the brightness from ' <b>500+ cd/m<sup>2</sup></b> ' to ' <b>1000 cd/m<sup>2</sup></b> ' Increased the lithium battery size from ' <b>6000mAh</b> ' to ' <b>7000mAh</b> ' Included ' <b>VESA 75 back plate</b> ' as standard Increased the cover glass thickness from ' <b>1.1mm</b> ' to ' <b>1.8mm</b> ', for more impact resistance Updated the silicone rubber frame design, to increase the ruggedness of the tablet Updated the barcode scanner from ' <b>LV 3296 OEM</b> ' to ' <b>Honeywell N4680</b> ' scan engine Updated the Wi-Fi & Bluetooth module from ' <b>6221-PUC</b> ' to ' <b>Intel® Wi-Fi 6 AX200</b> ' Updated the front & back camera module (minor modifications) Added screwholes on the back for capacitive touch stylus holder
<b>v1</b>	- First version

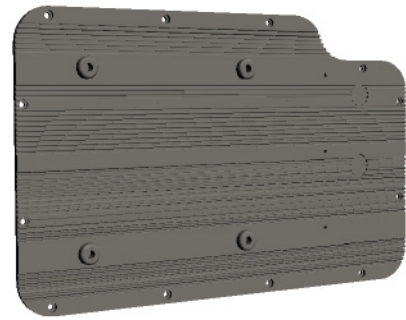
Errata and technical modifications reserved

# Included Accessories

## VESA 75 back plate (attached to tablet)

Product name				VESA 75 back plate			
EAN number				N/A			
Global Article Code	European Article Code	Release date (D/M/Y)	Version	Global Article Code	European Article Code	Release date (D/M/Y)	Version
-	-	23/07/2023	V1	-	-	-	-

- VESA 75 holes for solid mounting
- Complete black PC-ABS back-plate
- Screw holes for capacitive touch stylus holder
- Ripples for heat management



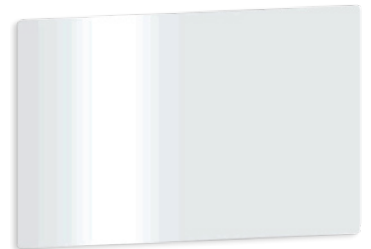
## Battery (inside)



## Power Supply



## Plastic Screen Protector





# Optional Accessories

## Standard Tablet Docking Station

Product name				Tablet Docking Station			
EAN number				N/A			
Global Article Code	European Article Code	Release date (D/M/Y)	Version	Global Article Code	European Article Code	Release date (D/M/Y)	Version
3030509073	1010502266	01/10/2021	v1				



- Easy 9-pin holder, to charge industrial tablet
- DC-In interface with Input voltage 12V/2.4A (power supply included)
- 4 USB 2.0 ports connected to the tablet directly when mounted
- Reliable plastic case, easy to handle and mount

## Capacitive Touch Stylus

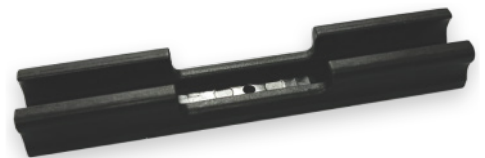
Product name				Capacitive Touch Stylus			
Model number / EAN number				FTCAPSTYLUS / 6920734091065			
Global Article Code	European Article Code	Release date (D/M/Y)	Version	Global Article Code	European Article Code	Release date (D/M/Y)	Version
20205003213	1010501169	01/11/2020	v1				



- Easy-to-use capacitive touch stylus
- Perfect accessory for the faytech flat
- Light and durable aluminum housing
- Requires different touch firmware for tablet, download from [www.faytech.com/downloads/](http://www.faytech.com/downloads/) or contact your sales representative

## Capacitive Touch Stylus Holder

Product name				Capacitive Touch Stylus Holder			
EAN number				N/A			
Global Article Code	European Article Code	Release date (D/M/Y)	Version	Global Article Code	European Article Code	Release date (D/M/Y)	Version
3030509850	-	01/03/2022	v1				



- Holder for clicking Capacitive Touch Stylus to back of tablet
- High quality black TPU plastic holder
- Iron connection plate for solid mounting
- Includes 3 black-coated stainless steel screws (KM2\*5)

## Hand Strap

Product name				Hand Strap			
EAN number				N/A			
Global Article Code	European Article Code	Release date (D/M/Y)	Version	Global Article Code	European Article Code	Release date (D/M/Y)	Version
3030509327	1010502267	01/10/2021	v1				



- Black leather hand holder with straps
- Comfortable, light-weight & easy to hold
- Easily mountable using the tablet corner brackets